

How to Install the LibKey Nomad Browser Extension

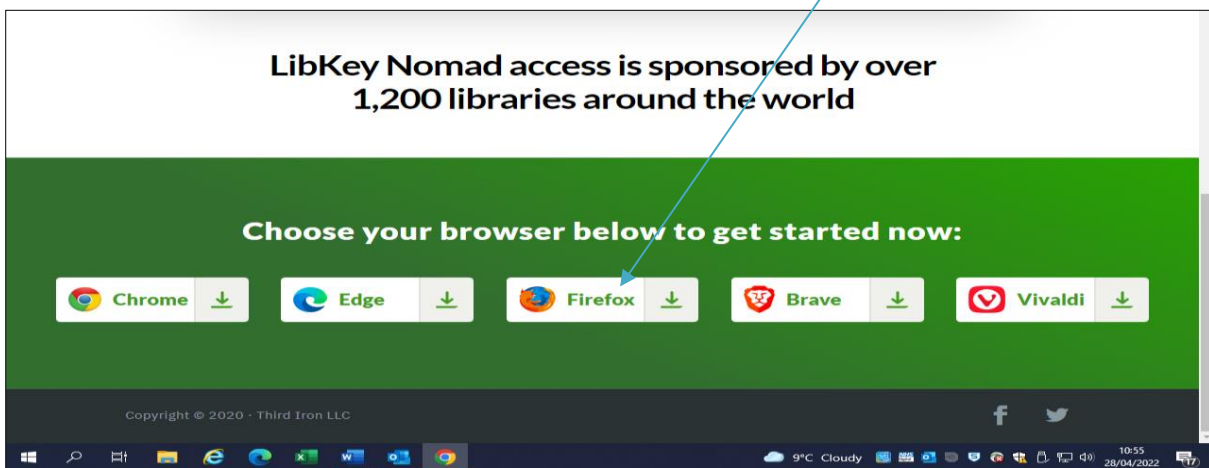
Please note that LibKey Nomad is already installed on all Trust computers, so skip to step 3 and 4 of this guide to permanently 'pin' the Nomad icon to your menu bar. Follow the full guide to install LibKey Nomad on non-Trust devices.

LibKey Nomad is a browser extension available in Google Chrome, Firefox, Edge, Brave, and Vivaldi, that allows you to easily link to the full text of journal articles where available. It works even when you are using non-Library subscribed tools like Google Scholar and PubMed to search for information.

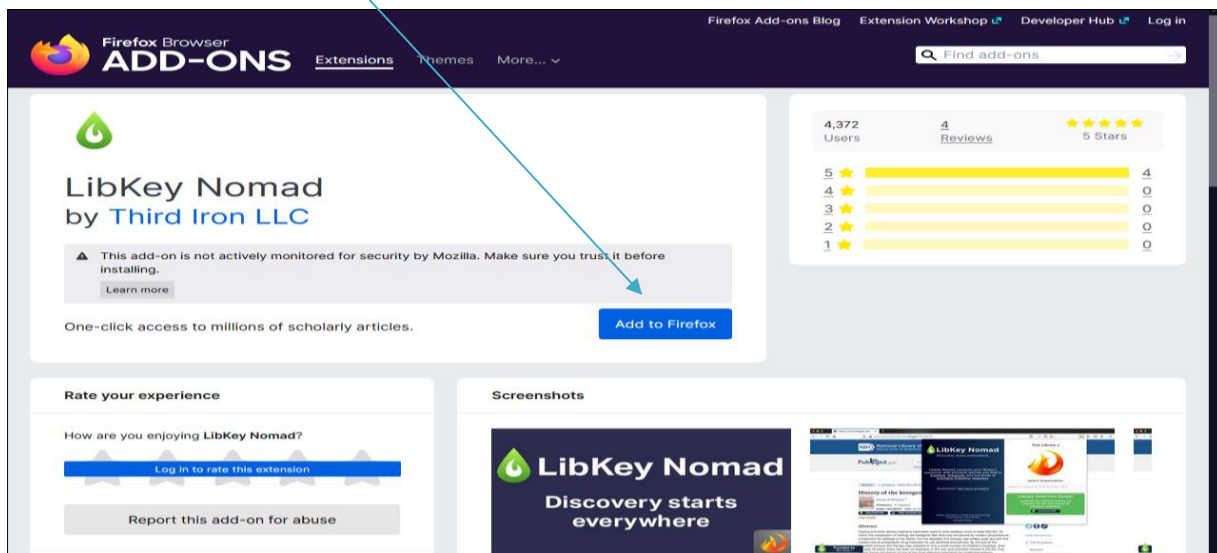
1) How do I download Libkey Nomad onto my non-Trust device?

To install go to <https://thirdiron.com/downloadnomad/> and click on or scroll to the bottom of the page and select a browser.

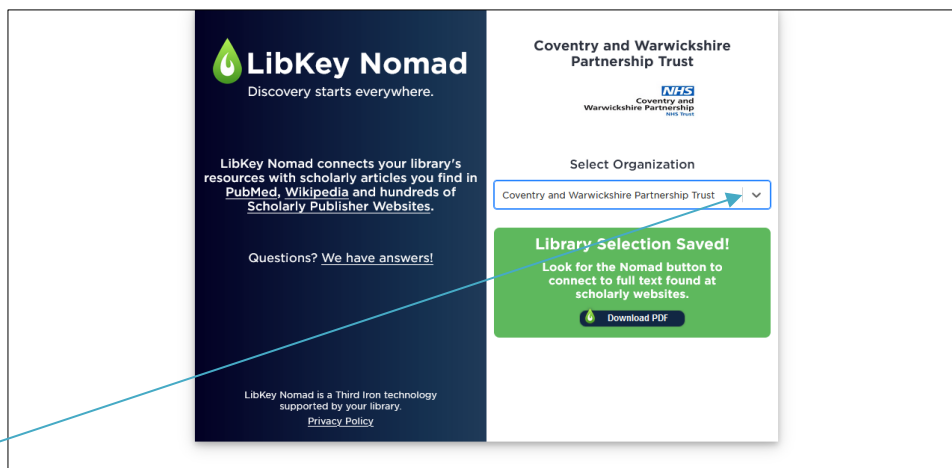
Get LibKey Nomad Now



2) Look for the 'Add' button on the page (e.g. 'Add to Firefox') to install the LibKey Nomad browser extension. (The position of the 'Add' button will vary depending on which browser you selected.)

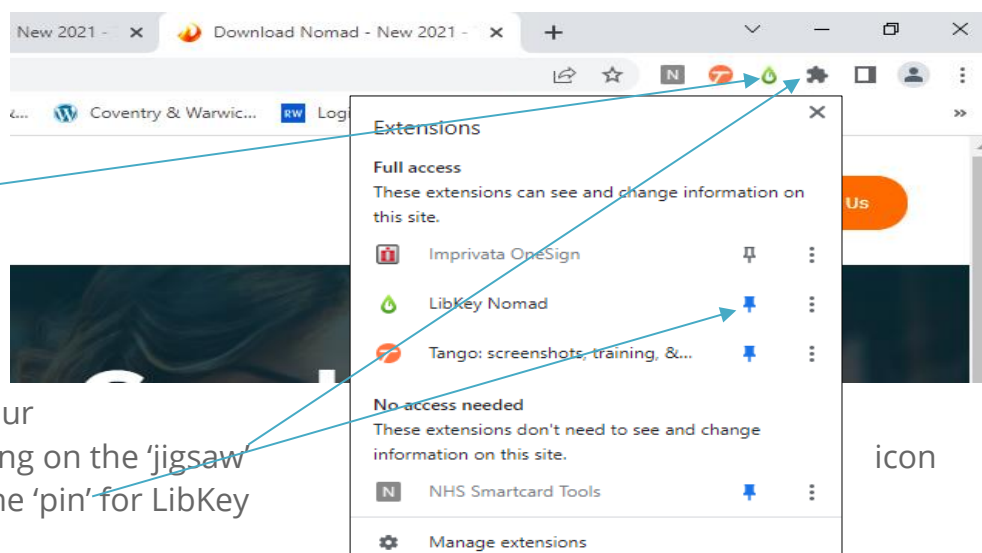


- 3) After installation, LibKey Nomad prompts you to select your subscribing institution. Select **'Coventry and Warwickshire Partnership Trust'** from the drop-down list.



NB: Your Organisation still needs to be selected on Trust devices.

- 4) The LibKey Nomad extension will show as a small green 'flame' icon in your Extensions menu. The icon can be fixed permanently to your menu bar by clicking on the 'jigsaw' and highlighting the 'pin' for LibKey Nomad.



- 5) How do I download a full-text article using LibKey Nomad? On finding an article you want to read (e.g. an article you have found via PubMed), look for the LibKey Nomad 'flame' icon in the bottom left-hand corner of your screen and click on it to access the full text. If full text is not available, the icon will appear with access options (e.g. Interlibrary Loan).

